

Test Report

No.: CKGEC24000874303

Date: Aug 12, 2024

Page 1 of 8

Client Name: HUBEI NEW HUAGUANG INFORMATION MATERIALS CO.LTD.

Client Address: NO.67,CHANG HONG NORTH ROAD,XIANGYANGCITY,HUBEI PROVINCE

Sample Name: D-ZK3L

Lot No.: 30621902062302

The above sample(s) and information were provided by the client.

SGS Job No.: CQP24-008490

Sample Receiving Date: Aug 05, 2024

Testing Period: Aug 05, 2024 ~ Aug 08, 2024

Test Requested: Select test(s) as requested by the client.

Test Method(s): Please refer to next page(s).

Test Result(s): Please refer to next page(s).

| Test Requirement | Conclusion |
|---|------------|
| EU RoHS Directive (EU) 2015/863 amending Annex II to Directive 2011/65/EU - Lead, Mercury, Cadmium, Hexavalent chromium, Polybrominated biphenyls (PBB), Polybrominated diphenyl ethers (PBDE), Bis(2-ethylhexyl) phthalate (DEHP), Butyl benzyl phthalate (BBP), Dibutyl phthalate (DBP) and Diisobutyl phthalate (DIBP) | Pass |

Signed for and on behalf of
SGS-CSTC Standards Technical Services (Chongqing) Co., Ltd.



Amber Xu
Approved Signatory

scan to see the report



1C157456



Unless otherwise agreed in writing, this document is issued by the Company subject to its General Conditions of Service printed overleaf, available on request or accessible at <http://www.sgs.com/en/Terms-and-Conditions.aspx> and, for electronic format documents, subject to Terms and Conditions for Electronic Documents at <http://www.sgs.com/en/Terms-and-Conditions/Terms-e-Documents.aspx>. Attention is drawn to the limitation of liability, indemnification and jurisdiction issues defined therein. Any holder of this document is advised that information contained hereon reflects the Company's findings at the time of its intervention only and within the limits of Client's instructions, if any. The Company's sole responsibility is to its Client and this document does not exonerate parties to a transaction from exercising all their rights and obligations under the transaction documents. This document cannot be reproduced except in full, without prior written approval of the Company. Any unauthorized alteration, forgery or falsification of the content or appearance of this document is unlawful and offenders may be prosecuted to the fullest extent of the law. Unless otherwise stated the results shown in this test report refer only to the sample(s) tested.

Attention: To check the authenticity of testing / inspection report & certificate, please contact us at telephone: (86-755) 8307 1443, or email: CN.Doccheck@sgs.com

SGS-CSTC Standards Technical Services (Chongqing) Co., Ltd.
Agriculture & Food Inspection Services (Chongqing) Co., Ltd.

Liangjiang Industrial Park, No.37, Cuitao Road, Yubei District, Chongqing, China 401120
中国·重庆·渝北区翠桃路37号(凉井工业园) 邮编: 401120

t (86-23) 6311 0882 www.sgs.com.cn
t (86-23) 6311 0882 sgs.china@sgs.com

Test Result(s):

Test Part Description:

| SN ID | Sample No. | SGS Sample ID | Description |
|-------|------------|-------------------------|-----------------------------|
| SN1 | A2 | CKG24-0008743-0001.C002 | Colorless translucent glass |

Remarks:

- (1) 1 mg/kg = 1 ppm = 0.0001%
- (2) MDL = Method Detection Limit
- (3) ND = Not Detected (< MDL)
- (4) "-" = Not Regulated

EU RoHS Directive (EU) 2015/863 amending Annex II to Directive 2011/65/EU - Lead, Mercury, Cadmium, Hexavalent chromium, Polybrominated biphenyls (PBB), Polybrominated diphenyl ethers (PBDE), Bis(2-ethylhexyl) phthalate (DEHP), Butyl benzyl phthalate (BBP), Dibutyl phthalate (DBP) and Diisobutyl phthalate (DIBP)

Test Method: With reference to IEC 62321-4:2013+AMD1:2017, IEC 62321-5:2013, IEC 62321-7-2:2017, IEC 62321-6:2015 and IEC 62321-8:2017, analysis was performed by ICP-OES/AAS, UV-Vis and GC-MS.

| Test Item(s) | Limit | Unit(s) | MDL | A2 |
|---|-------|---------|-----|----|
| Lead (Pb) | 1000 | mg/kg | 2 | ND |
| Mercury (Hg) | 1000 | mg/kg | 2 | ND |
| Cadmium (Cd) | 100 | mg/kg | 2 | ND |
| Hexavalent Chromium (Cr(VI)) | 1000 | mg/kg | 8 | ND |
| Polybrominated biphenyls (PBB) | 1000 | mg/kg | - | ND |
| Monobrominated biphenyl (MonoBB) | - | mg/kg | 5 | ND |
| Dibrominated biphenyl (DiBB) | - | mg/kg | 5 | ND |
| Tribrominated biphenyl (TriBB) | - | mg/kg | 5 | ND |
| Tetrabrominated biphenyl (TetraBB) | - | mg/kg | 5 | ND |
| Pentabrominated biphenyl (PentaBB) | - | mg/kg | 5 | ND |
| Hexabrominated biphenyl (HexaBB) | - | mg/kg | 5 | ND |
| Heptabrominated biphenyl (HeptaBB) | - | mg/kg | 5 | ND |
| Octabrominated biphenyl (OctaBB) | - | mg/kg | 5 | ND |
| Nonabrominated biphenyl (NonaBB) | - | mg/kg | 5 | ND |
| Decabrominated biphenyl (DecaBB) | - | mg/kg | 5 | ND |
| Polybrominated diphenyl ethers (PBDE) | 1000 | mg/kg | - | ND |
| Monobrominated diphenyl ether (MonoBDE) | - | mg/kg | 5 | ND |
| Dibrominated diphenyl ether (DiBDE) | - | mg/kg | 5 | ND |
| Tribrominated diphenyl ether (TriBDE) | - | mg/kg | 5 | ND |
| Tetrabrominated diphenyl ether (TetraBDE) | - | mg/kg | 5 | ND |
| Pentabrominated diphenyl ether (PentaBDE) | - | mg/kg | 5 | ND |
| Hexabrominated diphenyl ether (HexaBDE) | - | mg/kg | 5 | ND |
| Heptabrominated diphenyl ether (HeptaBDE) | - | mg/kg | 5 | ND |



Unless otherwise agreed in writing, this document is issued by the Company subject to its General Conditions of Service printed overleaf, available on request or accessible at <http://www.sgs.com/en/Terms-and-Conditions.aspx> and, for electronic format documents, subject to Terms and Conditions for Electronic Documents at <http://www.sgs.com/en/Terms-and-Conditions/Terms-e-Documents.aspx>. Attention is drawn to the limitation of liability, indemnification and jurisdiction issues defined therein. Any holder of this document is advised that information contained hereon reflects the Company's findings at the time of its intervention only and within the limits of Client's instructions, if any. The Company's sole responsibility is to its Client and this document does not exonerate parties to a transaction from exercising all their rights and obligations under the transaction documents. This document cannot be reproduced except in full, without prior written approval of the Company. Any unauthorized alteration, forgery or falsification of the content or appearance of this document is unlawful and offenders may be prosecuted to the fullest extent of the law. Unless otherwise stated the results shown in this test report refer only to the sample(s) tested.

Attention: To check the authenticity of testing / inspection report & certificate, please contact us at telephone: (86-755) 8307 1443, or email: CN.Doccheck@sgs.com
 Liangjing Industrial Park, No.37, Cuitao Road, Yubei District, Chongqing, China 401120 t (86-23) 6311 0882 www.sgsgroup.com.cn
 中国·重庆·渝北区翠桃路37号(凉井工业园) 邮编: 401120 t (86-23) 6311 0882 sgs.china@sgs.com

Test Report

No.: CKGEC24000874303

Date: Aug 12, 2024

Page 3 of 8

| Test Item(s) | Limit | Unit(s) | MDL | A2 |
|---|-------|---------|-----|----|
| Octabrominated diphenyl ether (OctaBDE) | - | mg/kg | 5 | ND |
| Nonabrominated diphenyl ether (NonaBDE) | - | mg/kg | 5 | ND |
| Decabrominated diphenyl ether (DecaBDE) | - | mg/kg | 5 | ND |
| Bis(2-ethylhexyl) phthalate (DEHP) | 1000 | mg/kg | 50 | ND |
| Butyl benzyl phthalate (BBP) | 1000 | mg/kg | 50 | ND |
| Dibutyl phthalate (DBP) | 1000 | mg/kg | 50 | ND |
| Diisobutyl phthalate (DIBP) | 1000 | mg/kg | 50 | ND |

Notes:

- (1) The maximum permissible limit is quoted from RoHS Directive (EU) 2015/863.
- (2) IEC 62321 series is equivalent to EN 62321 series.
- (3) The restriction of DEHP, BBP, DBP and DIBP shall apply to medical devices, including in vitro medical devices, and monitoring and control instruments, including industrial monitoring and control instruments, from 22 July 2021.

Unless otherwise stated, the decision rule for conformity reporting is based on Binary Statement for Simple Acceptance Rule ($w=0$) stated in ILAC-G8:09/2019.



Unless otherwise agreed in writing, this document is issued by the Company subject to its General Conditions of Service printed overleaf, available on request or accessible at <http://www.sgs.com/en/Terms-and-Conditions.aspx> and, for electronic format documents, subject to Terms and Conditions for Electronic Documents at <http://www.sgs.com/en/Terms-and-Conditions/Terms-e-Documents.aspx>. Attention is drawn to the limitation of liability, indemnification and jurisdiction issues defined therein. Any holder of this document is advised that information contained hereon reflects the Company's findings at the time of its intervention only and within the limits of Client's instructions, if any. The Company's sole responsibility is to its Client and this document does not exonerate parties to a transaction from exercising all their rights and obligations under the transaction documents. This document cannot be reproduced except in full, without prior written approval of the Company. Any unauthorized alteration, forgery or falsification of the content or appearance of this document is unlawful and offenders may be prosecuted to the fullest extent of the law. Unless otherwise stated the results shown in this test report refer only to the sample(s) tested.

Attention: To check the authenticity of testing / inspection report & certificate, please contact us at telephone: (86-755) 8307 1443, or email: CN.Doccheck@sgs.com

Liángjīng Industrial Park, No.37, Cuitao Road, Yubei District, Chongqing, China 401120 t (86-23) 6311 0882 www.sgsgroup.com.cn
 中国·重庆·渝北区翠桃路37号(凉井工业园) 邮编: 401120 t (86-23) 6311 0882 sgs.china@sgs.com

Elements Testing Flow Chart

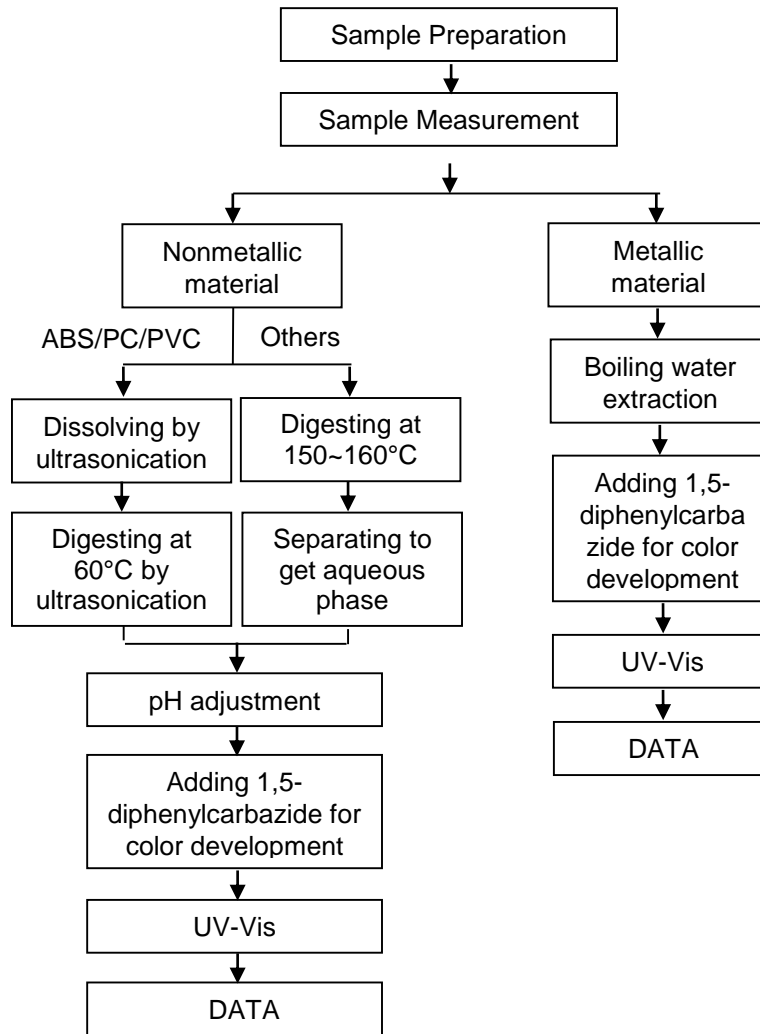
These samples were dissolved totally by pre-conditioning method according to below flow chart.



Unless otherwise agreed in writing, this document is issued by the Company subject to its General Conditions of Service printed overleaf, available on request or accessible at <http://www.sgs.com/en/Terms-and-Conditions.aspx> and, for electronic format documents, subject to Terms and Conditions for Electronic Documents at <http://www.sgs.com/en/Terms-and-Conditions/Terms-e-Documents.aspx>. Attention is drawn to the limitation of liability, indemnification and jurisdiction issues defined therein. Any holder of this document is advised that information contained hereon reflects the Company's findings at the time of its intervention only and within the limits of Client's instructions, if any. The Company's sole responsibility is to its Client and this document does not exonerate parties to a transaction from exercising all their rights and obligations under the transaction documents. This document cannot be reproduced except in full, without prior written approval of the Company. Any unauthorized alteration, forgery or falsification of the content or appearance of this document is unlawful and offenders may be prosecuted to the fullest extent of the law. Unless otherwise stated the results shown in this test report refer only to the sample(s) tested.

Attention: To check the authenticity of testing / inspection report & certificate, please contact us at telephone: (86-755) 8307 1443, or email: CN.Doccheck@sgs.com

Hexavalent Chromium (Cr(VI)) Testing Flow Chart



Unless otherwise agreed in writing, this document is issued by the Company subject to its General Conditions of Service printed overleaf, available on request or accessible at <http://www.sgs.com/en/Terms-and-Conditions.aspx> and, for electronic format documents, subject to Terms and Conditions for Electronic Documents at <http://www.sgs.com/en/Terms-and-Conditions/Terms-e-Documents.aspx>. Attention is drawn to the limitation of liability, indemnification and jurisdiction issues defined therein. Any holder of this document is advised that information contained hereon reflects the Company's findings at the time of its intervention only and within the limits of Client's instructions, if any. The Company's sole responsibility is to its Client and this document does not exonerate parties to a transaction from exercising all their rights and obligations under the transaction documents. This document cannot be reproduced except in full, without prior written approval of the Company. Any unauthorized alteration, forgery or falsification of the content or appearance of this document is unlawful and offenders may be prosecuted to the fullest extent of the law. Unless otherwise stated the results shown in this test report refer only to the sample(s) tested.

Attention: To check the authenticity of testing / inspection report & certificate, please contact us at telephone: (86-755) 8307 1443, or email: CN.Doccheck@sgs.com
 Liangjing Industrial Park, No.37, Cuitao Road, Yubei District, Chongqing, China 401120 t (86-23) 6311 0882 www.sgs.com.cn
 中国·重庆·渝北区翠桃路37号(凉井工业园) 邮编: 401120 t (86-23) 6311 0882 sgs.china@sgs.com

PBB/PBDE Testing Flow Chart



Unless otherwise agreed in writing, this document is issued by the Company subject to its General Conditions of Service printed overleaf, available on request or accessible at <http://www.sgs.com/en/Terms-and-Conditions.aspx> and, for electronic format documents, subject to Terms and Conditions for Electronic Documents at <http://www.sgs.com/en/Terms-and-Conditions/Terms-e-Documents.aspx>. Attention is drawn to the limitation of liability, indemnification and jurisdiction issues defined therein. Any holder of this document is advised that information contained hereon reflects the Company's findings at the time of its intervention only and within the limits of Client's instructions, if any. The Company's sole responsibility is to its Client and this document does not exonerate parties to a transaction from exercising all their rights and obligations under the transaction documents. This document cannot be reproduced except in full, without prior written approval of the Company. Any unauthorized alteration, forgery or falsification of the content or appearance of this document is unlawful and offenders may be prosecuted to the fullest extent of the law. Unless otherwise stated the results shown in this test report refer only to the sample(s) tested.

Attention: To check the authenticity of testing /inspection report & certificate, please contact us at telephone: (86-755) 8307 1443, or email: CN.Doccheck@sgs.com

Phthalates Testing Flow Chart



Unless otherwise agreed in writing, this document is issued by the Company subject to its General Conditions of Service printed overleaf, available on request or accessible at <http://www.sgs.com/en/Terms-and-Conditions.aspx> and, for electronic format documents, subject to Terms and Conditions for Electronic Documents at <http://www.sgs.com/en/Terms-and-Conditions/Terms-e-Documents.aspx>. Attention is drawn to the limitation of liability, indemnification and jurisdiction issues defined therein. Any holder of this document is advised that information contained hereon reflects the Company's findings at the time of its intervention only and within the limits of Client's instructions, if any. The Company's sole responsibility is to its Client and this document does not exonerate parties to a transaction from exercising all their rights and obligations under the transaction documents. This document cannot be reproduced except in full, without prior written approval of the Company. Any unauthorized alteration, forgery or falsification of the content or appearance of this document is unlawful and offenders may be prosecuted to the fullest extent of the law. Unless otherwise stated the results shown in this test report refer only to the sample(s) tested.

Attention: To check the authenticity of testing / inspection report & certificate, please contact us at telephone: (86-755) 8307 1443, or email: CN.Doccheck@sgs.com

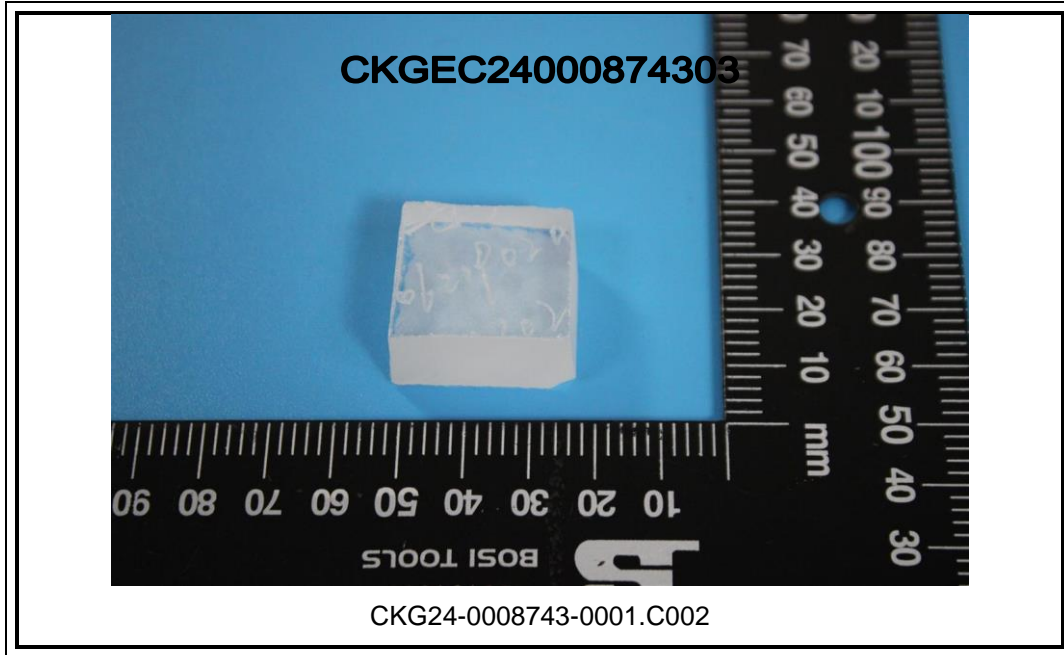
Test Report

No.: CKGEC24000874303

Date: Aug 12, 2024

Page 8 of 8

Sample Photo:



SGS authenticate the photo on original report only
*** End of Report ***



Unless otherwise agreed in writing, this document is issued by the Company subject to its General Conditions of Service printed overleaf, available on request or accessible at <http://www.sgs.com/en/Terms-and-Conditions.aspx> and, for electronic format documents, subject to Terms and Conditions for Electronic Documents at <http://www.sgs.com/en/Terms-and-Conditions/Terms-e-Documents.aspx>. Attention is drawn to the limitation of liability, indemnification and jurisdiction issues defined therein. Any holder of this document is advised that information contained hereon reflects the Company's findings at the time of its intervention only and within the limits of Client's instructions, if any. The Company's sole responsibility is to its Client and this document does not exonerate parties to a transaction from exercising all their rights and obligations under the transaction documents. This document cannot be reproduced except in full, without prior written approval of the Company. Any unauthorized alteration, forgery or falsification of the content or appearance of this document is unlawful and offenders may be prosecuted to the fullest extent of the law. Unless otherwise stated the results shown in this test report refer only to the sample(s) tested.

Attention: To check the authenticity of testing / inspection report & certificate, please contact us at telephone: (86-755) 8307 1443, or email: CN.Doccheck@sgs.com

Liangjing Industrial Park, No.37, Cuitao Road, Yubei District, Chongqing, China 401120
中国·重庆·渝北区翠桃路37号(凉井工业园) 邮编: 401120

t (86-23) 6311 0882 www.sgs.com.cn
t (86-23) 6311 0882 sgs.china@sgs.com